



£875 Monthly

Elmhurst Avenue, London CR4 2HP

House Share | 1 Bedroom | 1 Bathroom

0208 819 1499

GREENS

[www.greensproperty.co.uk](http://www.greensproperty.co.uk)



# Step Inside

---

## Key Features

- Newly reburished en-suite for single occupancy
- Fully furnished
- Spacious lounge
- Garden
- Modern kitchen
- Free cleaning service of the room and communal areas.
- Situated on the ground floor
- All bills included
- Very Close to Mitcham Eastfields & Tooting stations
- Travel Zone 3

## Property Description

Greens Lettings brings to the market this newly refurbished amazing en-suite in Mitcham.

## Main Particulars

Greens Lettings brings to the market this stunning en-suite room in our boutique design friendly house share. The property has been newly refurbished to a very high standard and offers a design luxury co-living accommodation, consisting of 6 double en-suite rooms.

The open-plan kitchen is modern and aesthetically pleasing, fully integrated with all of the latest appliances, including fridge freezer, cooker, gas hob, dishwasher, microwave and washer dryer. This amazing house benefits from generously proportioned spaces and superb finishes throughout. The lounge is part of an informal open-plan space, which includes the kitchen and casual dining area, and makes entertaining a pleasure. Moreover, the living room offers large window openings which filter light in the area and leads to a beautiful rear garden to enjoy a lovely days or share a dinner with your like-minded mates.

The available room offers excellent standard of decor and it is situated on the ground floor facing the rear of the property. This stunning en-suite has been completely refurbished in a contemporary style and comes fully furnished with a comfortable double bed, wardrobe, chest of drawers, bedside table and workspace with a desk and chair.

Room size: 5.02 x 3.92 m

This property is situated in a nice residential area, within 10-15 minutes walking distance to Mitcham Eastfields station and Tooting stations. Only 5 minutes' walk to closest bus stop with lots of transport links to Putney, Brixton, Tooting, Mitcham, Streatham, Clapham , Central London and other local areas.

This lovely property is located only a few minutes from Figges Marsh Park which is perfect for spending summer afternoons with friends. Also, it offers plenty of shops (Lidl, Tesco, Co-op and other local shops) restaurants, bars and take away options. St George's Hospital can be reached within 20 minutes by bus.

This is for perfect place for professionals looking for a great room and a place to call home.

All bills included:

- Council tax
- Water
- Gas
- Electricity
- Free internet
- Free cleaning service of the room and communal areas.

As well as paying the rent, you may be required to make the following permitted payments.

Before the tenancy starts (payable to Greens Lettings Ltd 'the Agent'):

Holding Deposit: £201 (will be put towards rent)

Deposit: £875

During the tenancy (payable to Greens Lettings Ltd 'the Agent'):

- \* Payment of up to £50 for any changes on the tenancy

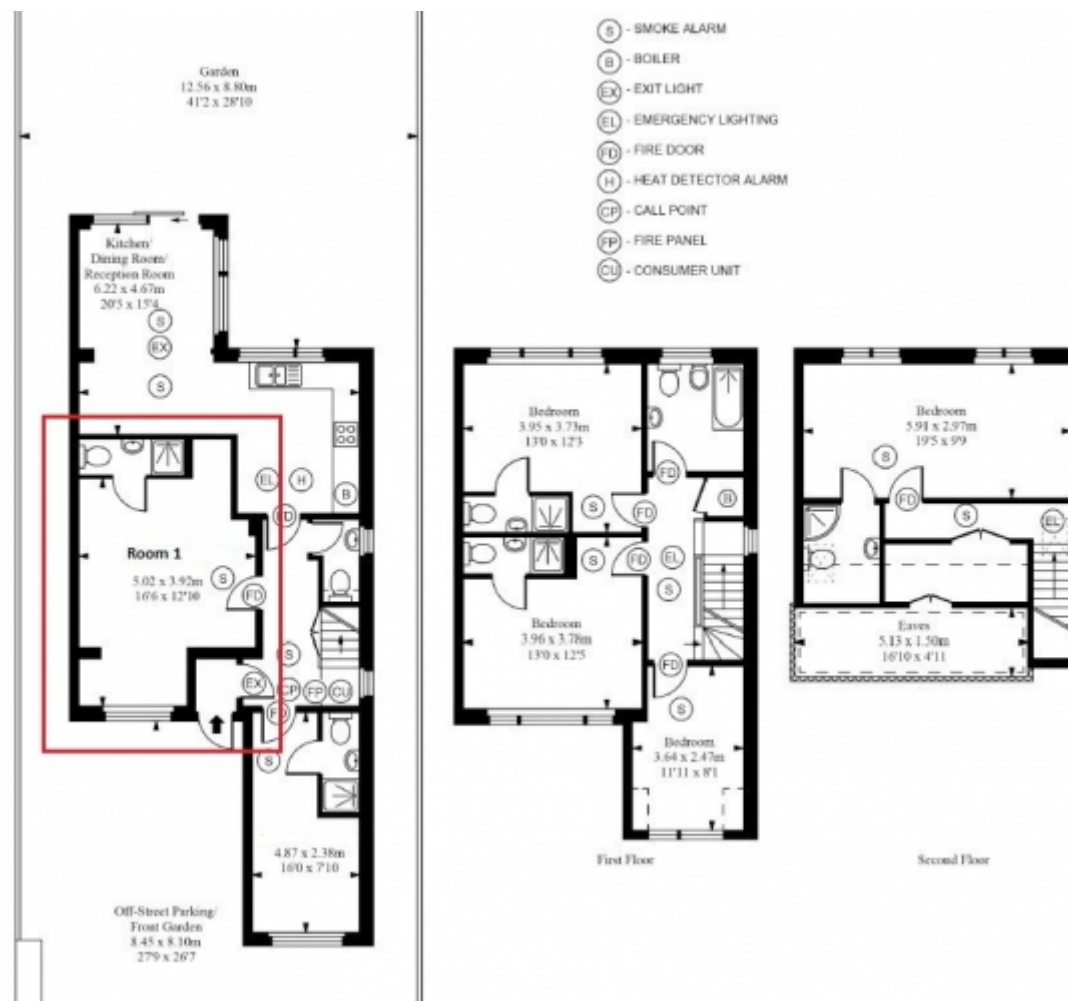
- \* Payment of up to £15 for the reasonably incurred costs for the loss of keys/security devices.

- \* Payment of rent lost due to the unforeseen void period and £150 for early termination of the tenancy

Tenant protection: Greens Lettings Ltd is a member of UKALA, which is a client money protection scheme, and also a member of The Property Ombudsman, which is a redress scheme. You can find out more details on the agent's website or by contacting the agent directly.

Call Greens Property NOW to book a viewing and we guarantee you won't be disappointed.





Telephone: 0208 819 1499

GREENS

[www.greensproperty.co.uk](http://www.greensproperty.co.uk)